

MONTHLY MEMBERSHIP PROGRESS REPORT

LOCATION INDIA

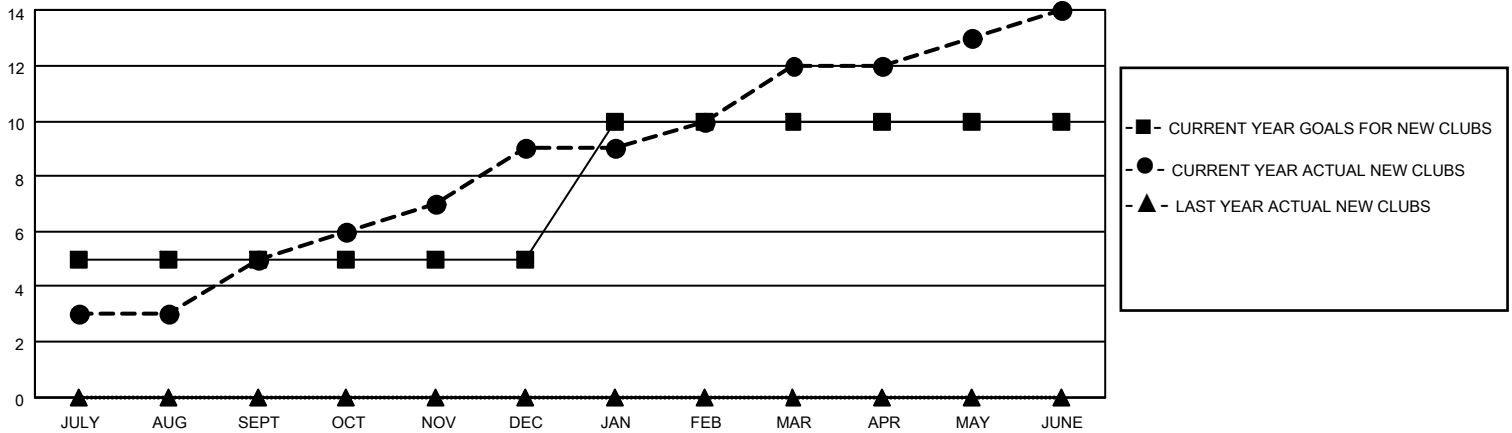
District 324 A

Results as of: 6/30/2022

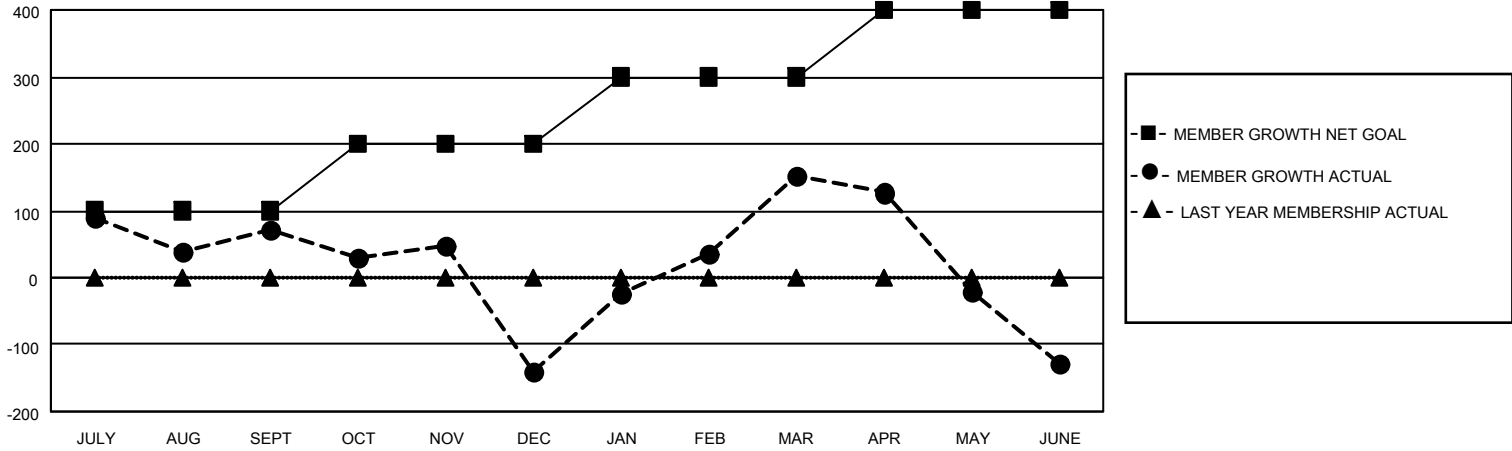
Clubs			
RESULTS FOR 2021-2022			
QUARTER	NEW CLUB GOAL	NEW CLUBS	DROPPED CLUBS
JULY/AUG/SEPT	5	5	5
OCT/NOV/DEC	0	4	8
JAN/FEB/MAR	5	3	1
APR/MAY/JUNE	0	2	2

Members			
RESULTS FOR 2021-2022			
QUARTER	MEMBER GROWTH NET GOAL	MEMBER GROWTH ACTUAL	DROPPED MEMBERS ACTUAL (including transfers)
JULY/AUG/SEPT	100	301	217
OCT/NOV/DEC	100	178	383
JAN/FEB/MAR	100	466	88
APR/MAY/JUNE	100	228	490

GOALS AND ACTUAL NEW CLUBS CUMULATIVE



GOALS AND ACTUAL MEMBERS CUMULATIVE



DROPPED CLUBS: 16

127 CLUBS OF 171 ADDED 1 OR MORE NEW MEMBERS

GENDER DISTRIBUTION

DROPPED MEMBERS

DECEASED	34
CLUB CANCELLED	366
OTHER	778
TOTAL	1,178

MALE	4,199 (78.49%)
FEMALE	1,151 (21.51%)
NON BINARY	0 (0.00%)
PREFER NOT TO ANSWER	0 (0.00%)

[CLICK HERE FOR CUMULATIVE MEMBERSHIP DATA](#)

TOTAL FAMILY UNIT MEMBERS	2,333
FAMILY MEMBERS PAYING HALF DUES	1,285